

Dec. 1969

Studio International

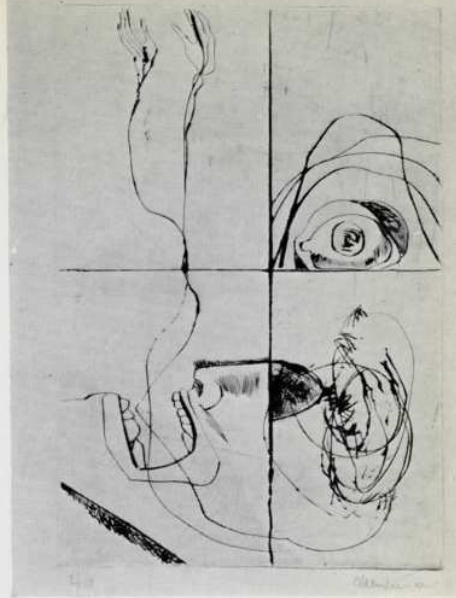
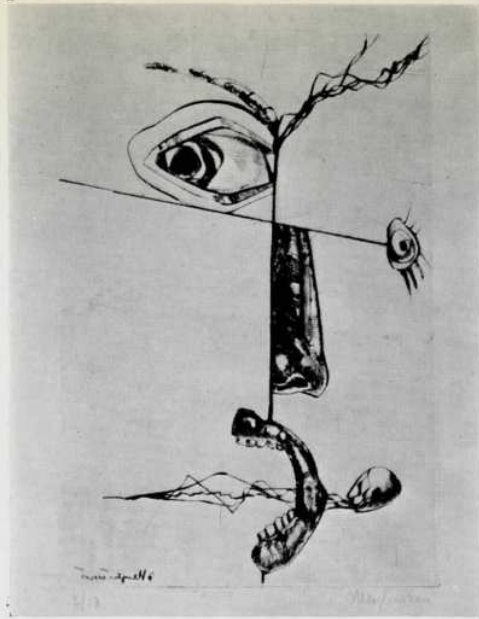
Vol 178 No 917

Journal of modern art

DM9 \$1.50

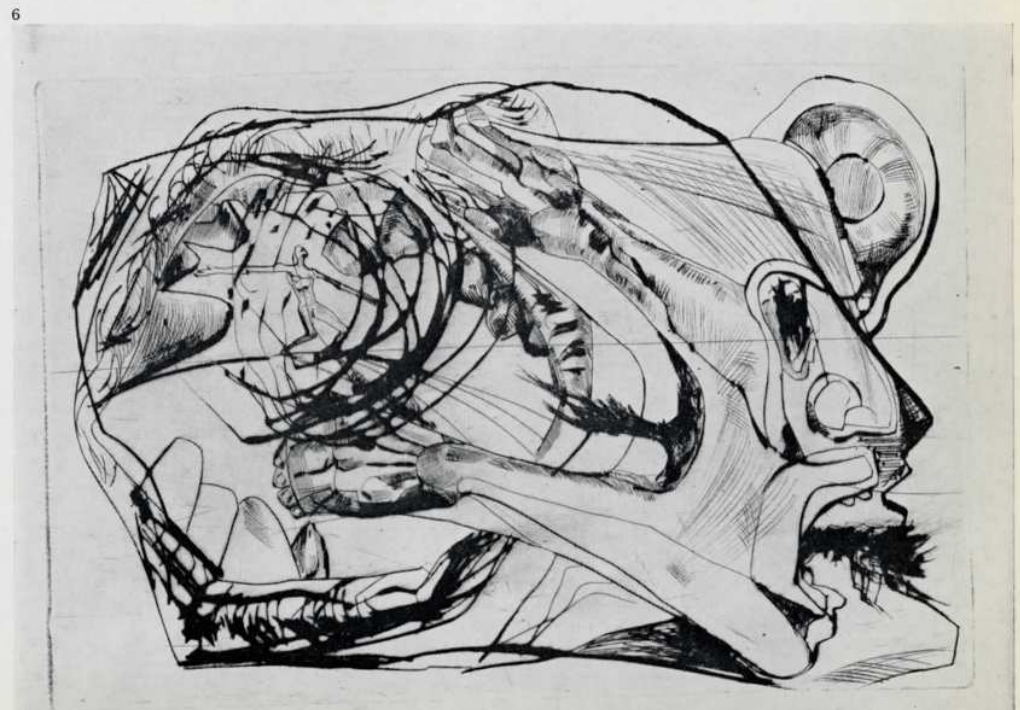
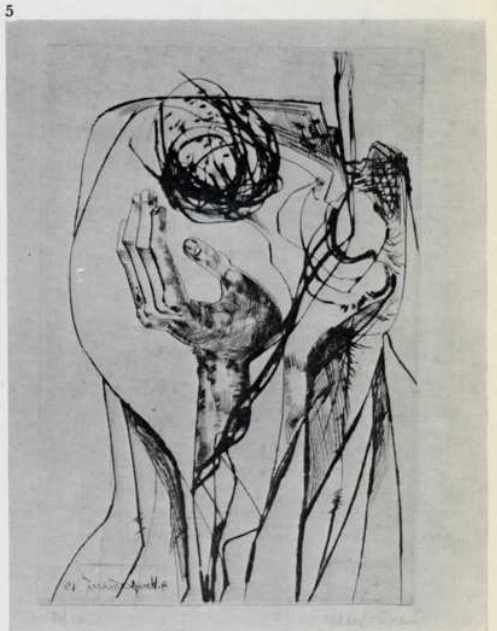
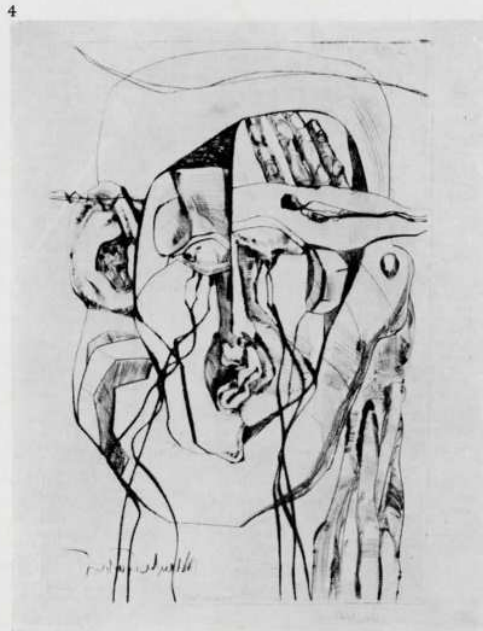
Supplement:
Photographs and prints





1-6
Ernst Niezvestny's *The Scream*: the working out of an intuition—six images from a suite of twenty etchings, each 12 × 8 in.

(An exhibition of Niezvestny's etchings is scheduled to open at the Musée d'Art Moderne, Paris, this January)



Robert Rauschenberg

A collage 'comment' on his latest suite of prints, specially contributed to *Studio International* by the artist.

A.B. MAN'S LARGEST CONSTRUCTION THE SAME SIZE FOR 15 MILES. NO ARCHITECT. DESIGNED FROM PROBLEMS AND SPECIFICATIONS. FUNCTION. TURKEY BUZZARDS NEST ON TOP. ONLY POSSIBLE TO THINK HOW BIG IT IS. CAN'T FEEL IT. ENTER. INSIDE LARGER THAN ALL OUTSIDES. LEVEL AFTER LEVEL MEN OF TRADE UNIFORMED CLANNING CLIMBING. BEING WASHED IN AN OUT OF VIEW BY A COMMON OCEAN OF WORK. HIGHER. THE GROUND MOVES DEEPER UNTIL THE PEOPLE UNDER SEEM SIDEWALKED. MOVED OUT ACROSS THE OPEN SPACE ON SUSPENSION LIKE FALLING IN SIZE WITHOUT SCALE. FEARSOME AND STATIC.



ASLEEP BUT DREAMED AWAKE.

JULY 16, 1969

3 A.M. WAITING WALKING SMOKING ON VIEWING SITE AS CLOSE AS POSSIBLE APOLLO II COVERED AND SHIMMERING IN ICE.

WAITING

SINGLE FOCUS EXHAUSTION FROM EXPECTATION.

WAITING

A CHANGE IN PITCH OF PEOPLE.

15 MIN.

WITHOUT PASSING.

THE TIME HAD COUNTED ITSELF OUT. HALF NOT BELIEVING FROM OVERHOPE.

I STARED.

SUNRISE BURNT THE NIGHT OUT OPENED THE WAY TURNED THE SKY WHITE.

NOTHING WILL ALREADY BE THE SAME. R.R.

ON A GRASSY HILL SEEING THE PERCHED APOLLO II FOR THE FIRST TIME. PROJECTING PROPER CAMI. QUIET AND UPRIGHT. EVENING RETURNED NOW POLISHED BY LIGHT SLEEP INSULATES BEGINNING OF INVOLVEMENT. AWAKE WITH INFORMATION THE DAY BEFORE IN A SINGLE SHAPE. FACTS HAD ASSEMBLED THEMSELVES. PHOTOGRAPHIC FILES OPEN THOUSANDS OF PHOTOS

REAFFIRMING AND INFORMING AWESOME DETAILS. PEOPLE HARDWARE IDEAS ACTIVITIES.



NIGHT AGAIN BACK TO THE HILL MOSQUITOES AND THE MAJESTIC BIRD. IT WAS BREATHING NOW HALF ASLEEP, RELAXING WITH FUELING. THE MOON ROSE. MY HEAD SAID FOR THE FIRST TIME MOON WAS GOING TO HAVE COMPANY AND KNEW IT.

THE BIRD'S NEST BLOOMED WITH FIRE AND CLOUDS.

SOFTLY LARGELY SLOWLY SILENTLY

APOLLO II STARTED TO MOVE UP.

THEN IT ROSE BEING LIFTED ON LIGHT. STANDING MID-AIR. IT BEGAN TO SING HAPPILY LOUD.

III ITS OWN JOY WANTING THE EARTH TO KNOW IT WAS GOING.

SATURATED. SUPER-SATURATED. AND SOLIDIFIED AIR WITH A SOUND THAT BECAME YOUR BODY.

FOR THAT WHILE EVERYTHING WAS THE SAME MATERIAL. POWER OVER POWER JOY PAIN ECSTASY THERE WAS NO INSIDE, NO OUT.

THEN BODILY TRANSCENDING A STATE OF ENERGY. APOLLO II WAS AIRBORNE.

LIFTING PULLING EVERYONE'S SPIRITS WITH IT.

FOR APOLLO 11

N.A.S.A. ARTIST
ROBERT RAUSCHENBERG
NOTES ON STONED MOON
LITHOGRAPHIC PROJECT

SKY GARDEN

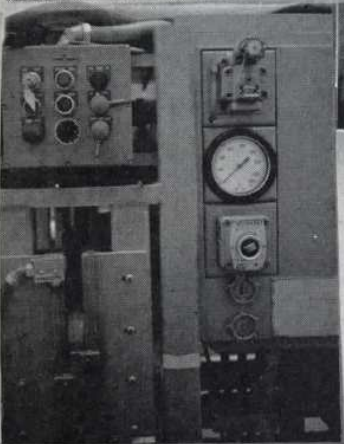


STONE: SKIN RECEPTIVE ORGANIC FLEXIBLE

PRINTING: A COOPERATIVE CREATIVE YIELDING
DEPENDENT ON
AGREEMENT WITH MATERIALS.

ASSUMING POTENTIALITY IN PROCESS IS SLEEP.

ART IS SOCIAL



COLOR
SAND
ROSES
GENTIAN
MATCHES
EYES
SHIRTS
APPLES
SKIN

GENEROSITY IS THE CONTROL OF A GOOD PRINT,
MATERIALLY AND IMMATERIALLY.

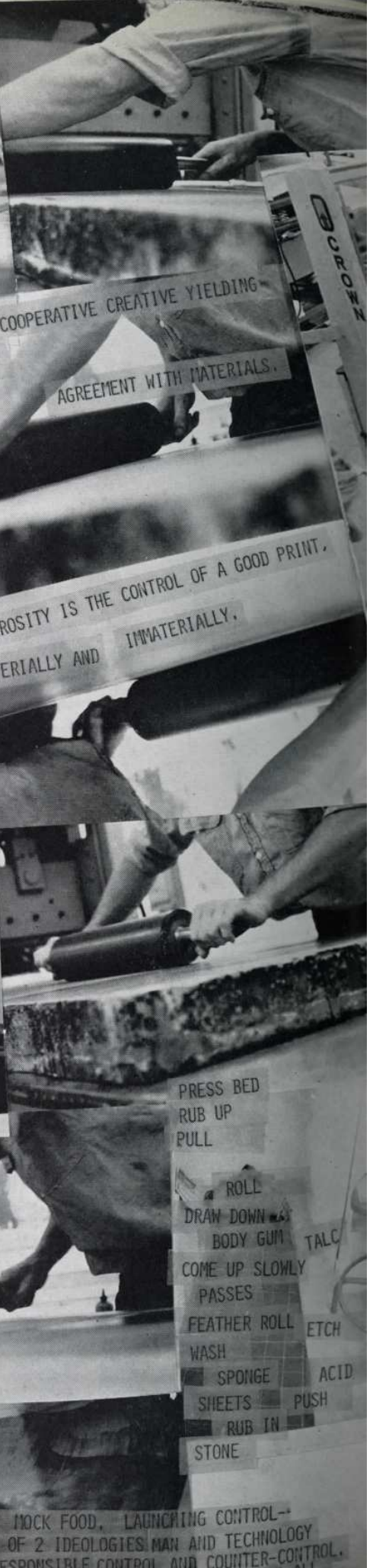
PAPER BAGS

A PRINT IS THE WIDOW OF THE STONE

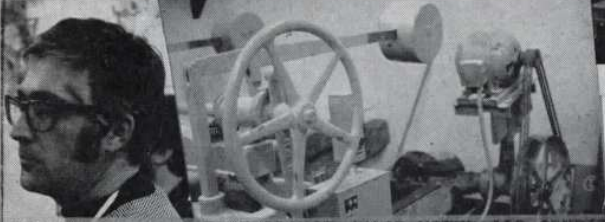
IDEAS CAN BE CRACKS IN THE STONE

OCTOBER 28, 1969

IMPOSING SMOTHERS YOUR MUSE



GEMINI. G.E.L.



RECOLLECTIONS: FREE ORANGE JUICE MOTEL AIR-CONDITIONED POOL
CAPE CANAVERAL (KENNEDY) I.D. PHOTO LIVE AUDUBON FLAT MARSH.

WET SMELL HIGHWAYS BUILT YESTERDAY PAST GHOST TOWNS OF TECHNOLOGY
ABANDONED WITH THE HASTE AND IMPATIENCE OF EMERGENCY SURGERY,
SHIELDS AGAINST AN INVITED THREAT. PROTECTION AND DANGER
GROWING AS A SINGLE UNIT. EACH DEPENDENTLY DEVELOPING THE
STRAIN AND STRENGTH OF A SPACE HYBRID. BITS OF WIRE.

FIRE STAINS. UNLOCKED DOORS MAKING NATURE LOOK MORNING NEW.
FACTS LIKE CIRCUMSTANTIAL EVIDENCE IN A LOST CASE.

MUSEUMS FOR BUSES OF SUN-BLEACHED GROUPS WHEELING THRU SPEAKERS OF
OBITUARY RAP KEEPING ROCKET CARCASSES GROUNDED. MEMORIES OF WAR.
INSTANT AGGRESSION. MILITARY AFFLUENCE.
RETIRED POWER. LIFE IN THE EMPTY COKE MACHINE.

PRESS BED
RUB UP
PULL
ROLL
DRAW DOWN
BODY GUM
COME UP SLOWLY
PASSES
FEATHER ROLL
WASH
SPONGE
SHEETS
RUB IN
STONE
TALC
ETCH
ACID
PUSH

LUNCH MOCK FOOD. LAUNCHING CONTROL--
AWARE OF 2 IDEOLOGIES MAN AND TECHNOLOGY
RESPONSIVE RESPONSIBLE CONTROL AND COUNTER-CONTROL.
A THEATRE WHERE PERFORMANCE IS ALL.